

WELCOME

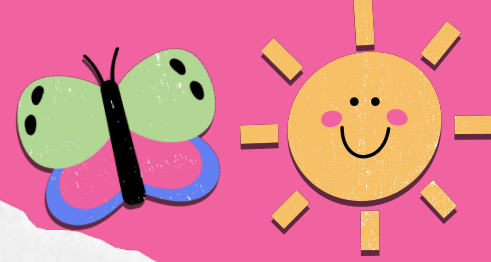
2024-2025



Miss Spalding's Class

Grade 6

About Me



Favorite color: Pink

Favorite subject: Social Studies

Favorite drink: Tea

Favorite food: Chocolate

When not at work you will see me...

Hiking, gardening, or reading

Hello!

This is my first year teaching at Flint Hill! I received both my bachelors and Masters from William & Mary. I studied Elementary Education, Sociology, and History. I am also ESL certified. I went to Flint Hill from Kindergarten-6th grade!



Daily Schedule

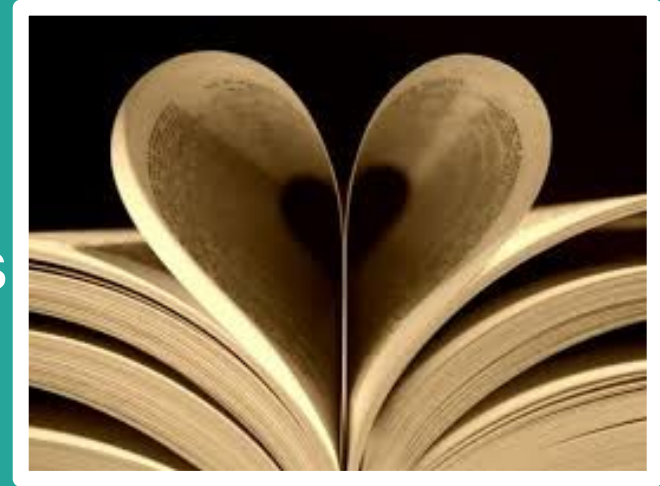
8:50 - 9:10	Morning Meeting
9:10 - 10:00	Science/History
10:00 - 11:00	Specials
11:00 - 1:00	Language Arts Block
1:00 - 2:00	Lunch/Recess
2:00 - 3:00	Math
3:00 - 3:30	Intervention

This
year we
will focus



Reading and Writing

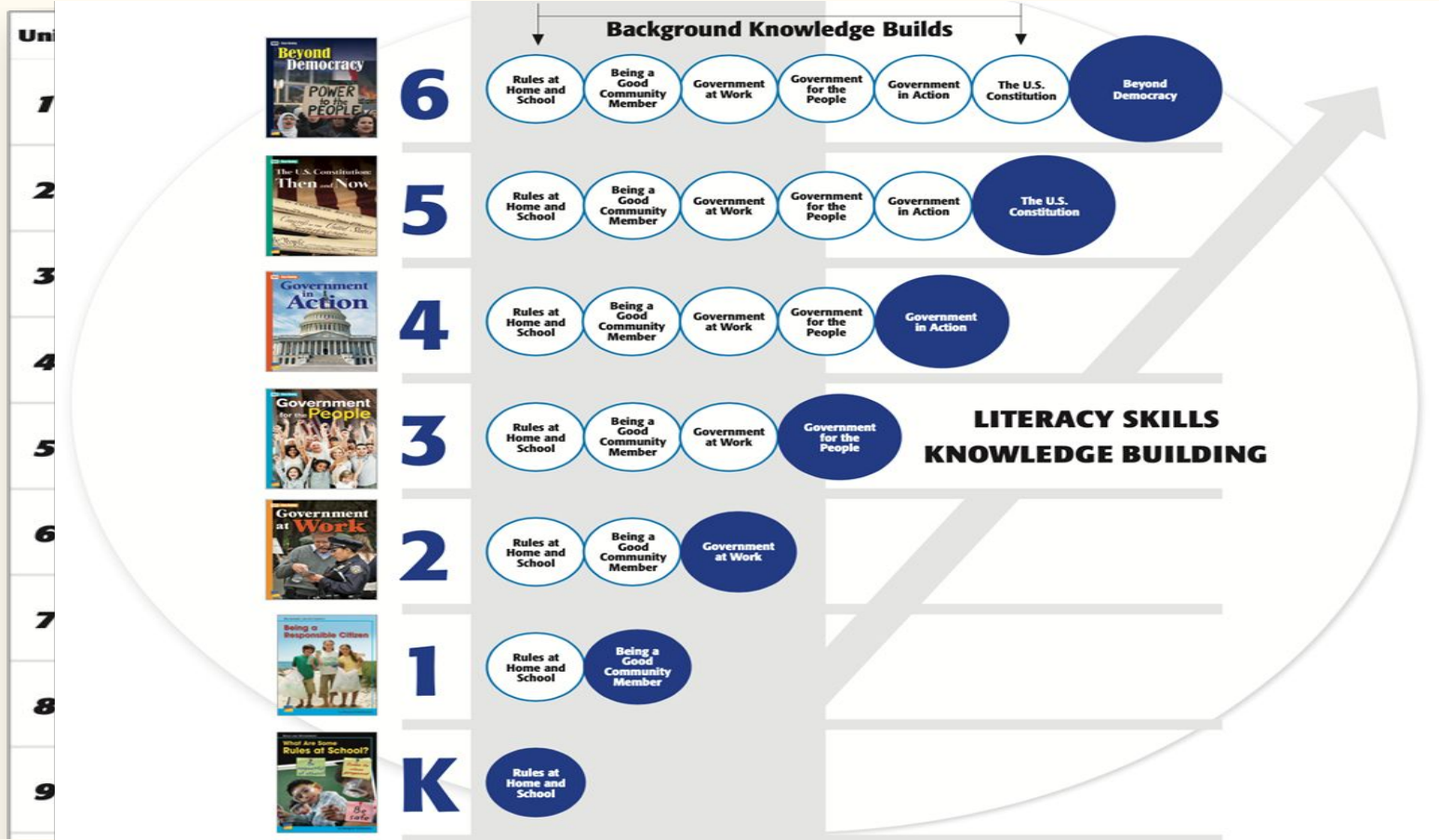
- Reader's Workshop
 - Skill-based mini-lesson
 - Differentiated Stations
 - Independent Reading
 - AAP resources/strategies
 - Power Up Program
- Writer's Workshop
 - Skill-based mini-lesson
 - 6+1 Traits



Our New Curriculum for K-6



Common Topics, K-6



Core Instruction With Multiple Populations

Benchmark Advance has numerous scaffolds and supports to assist all teachers in providing core instruction to meet the needs of students.

Benchmark Advance includes scaffolds and supports for students with diverse learning needs.

Explore the Benchmark Caregiver Website for more resources.

Benchmark Advance Language Acquisition curriculum that complements Benchmark Advance in providing tier 1 instruction for multilingual learners.

Based on the research, each quarter will focus on at least one supplemental AAP ELA curricular resource to be used throughout that quarter.

What do iReady scores tell you?

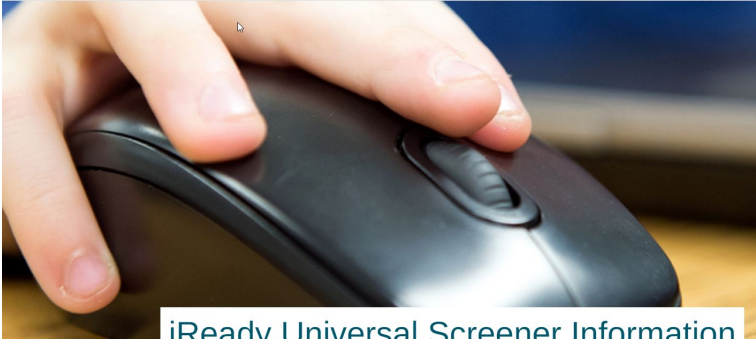
Test Information	Domain Performance	
Subject: Reading	Phonological Awareness	
End of Testing Window:	Phonics	
National Percentile:	High Frequency Words	
Benchmark Status:	Vocabulary	
Overall Performance:	Comprehension Literature	
Scaled Score	Comprehension Informational Text	



[Students](#) | [Employees](#) | [Families](#) | [Community](#) | [Careers](#) | [Schools](#) | [Superintendent](#)

Q [About FCPS](#) ▾ [Academics](#) ▾ [Services](#) ▾ [Get Involved](#)

[Fairfax County Public Schools](#) » [Academics](#) » [General](#) » [Student Tests & Assessments](#) » [Types of Student Assessment](#) » [iReady Universal Screener Information](#)



iReady Universal Screener Information


Learn more
at
[FCPS.edu/us](https://www.fcps.edu/us)

Reading Plans

- Area of Need
- Yearly Goal
- Quarterly objectives
- Quarterly data to monitor progress

ParentVUE Account Access

Login



Fairfax County
PUBLIC SCHOOLS
ENGAGE • INSPIRE • THRIVE

SIS STUDENT INFORMATION SYSTEM

Username:

Password:

Login

Math

- The Components of Math Workshop
 - Whole Group Instruction
 - Number Sense
 - Guided Math
 - Independent Practice
 - Group Share
 - Small Group Instruction
 - Mini Lesson
 - Independent Practice
 - Group Share

★ Prerequisite
assessment

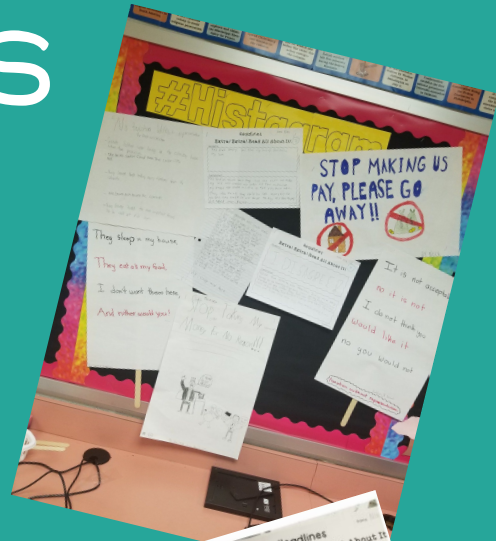
★ Flexible
Grouping

Science

- **Astronomy**
 - **Meteorology**
 - **Matter (Water)**
 - **Energy**
- ★ All units this year will build on the understanding of previous units from previous years.

Social Studies

- **Geography**
- **American Indians**
 - Inuit, Iroquois, Lakota, Pueblo, Kwakiutl
- **Early Explorers**
 - Spanish, French, English, Portuguese
- **Colonial America**
 - New England, Mid-Atlantic, Southern Colonies
- **American Revolution**
- **New Nation**
- **Westward Expansion & Reform (1801 - 1861)**
- **Civil War (1861 - 1865)**



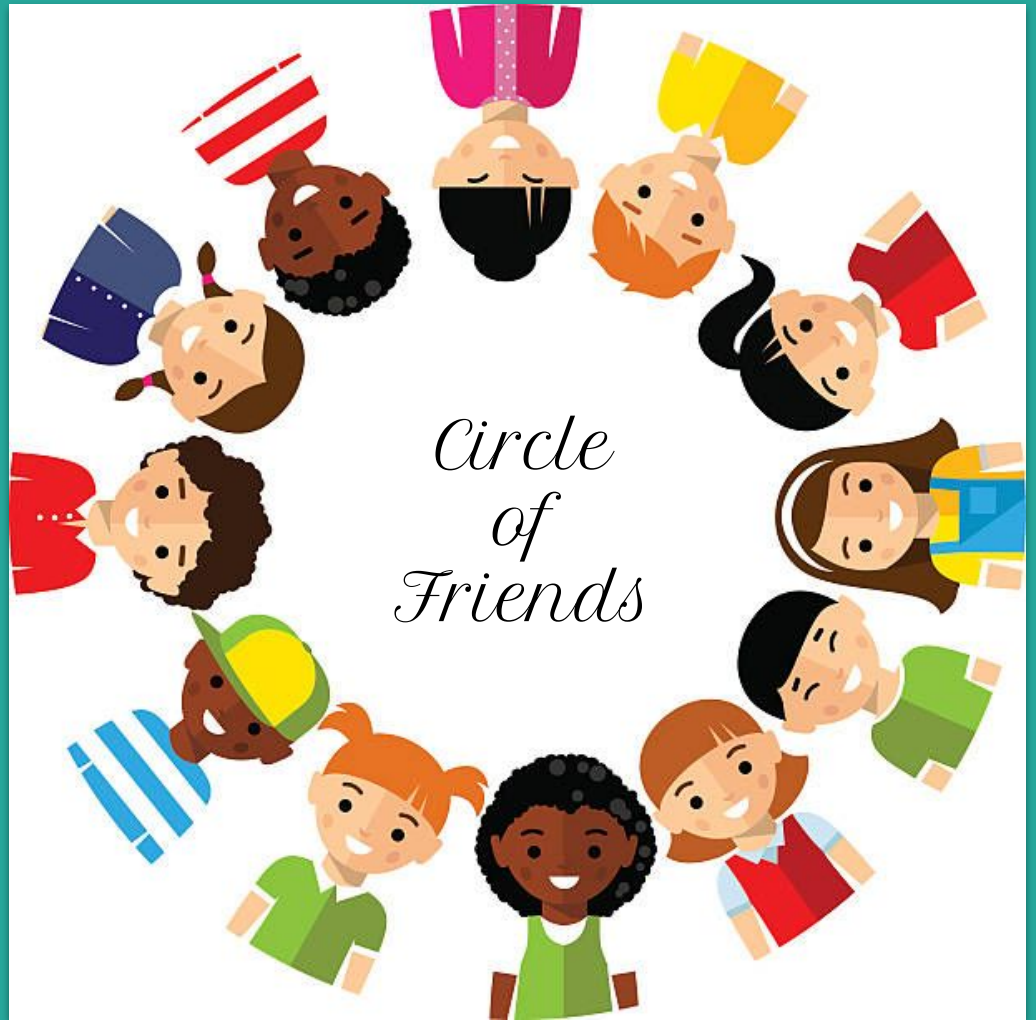
Content Strategies

- **Thinking Routines**
 - See, Think, Wonder
 - Step-Inside
 - 4 C's: Challenges, Concepts, Connections, Changes
- **Document Based Questions (DBQs)**
- **Primary Source Analysis**
- **Research Supported Through Library Resources**
- **Project Based Learning (PBL)**
- **Performance Based Assessments (PBA)**



Responsive Classroom

We will promote an
academic, socially,
and culturally
responsive learning
environment for our
students.



ONE

SCHOOL | COMMUNITY | WORLD

#ONEkindactVienna

ONE Kind Act can
change the world

We are continuing our ONE campaign and growing
our growth mindset.

You Belong Here

YOU
BELONG HERE



Communication

Weekly Newsletters
will be shared with
you this year via
email.

CLASS NEWS

6th Grade

August 26, 2022



LEARNING FOCUS

- PRIME Trait: Privacy
- Reading: Building a Community of Readers
- Writing: 6 + 1 Traits
- Math 6: F/D/P
- Math 7: Rat. Numbers
- Science: Astronomy



ANNOUNCEMENTS

Welcome back!
What a successful first week for our new sixth graders.

Please reflect with your child what went well for the week and what they can improve on as we move into week two. If you're looking for helpful questions to support this conversation, please see our "Note from the Teacher" section below.

We look forward to seeing you all at Back to School Night this coming Wednesday.



DATES TO REMEMBER

- August 31st @ 6:00/6:45 Back to School Night
- September 2nd & 5th No School - Labor Day



NOTE FROM THE TEACHER

1. What does PRIME stand for?
2. Which PRIME word do you think you will find the most challenging this year? The easiest?
3. What was your favorite activity this week?



Conferences

- Be on the lookout for an email with a SignUp Genius link for Fall Conferences
- Before school/After school options
- In-person or Virtual (via Zoom)
- **Ideally, I would like to meet with ALL families in the Fall and then on an as-needed basis for the remainder of the year**

Report Cards and Standard Based Grading

4 Consistently demonstrates concepts and skills of standard taught this quarter

- Frequency of behavior, nearly all the time
- Requires no support when demonstrating understanding
- Demonstrates a thorough understanding of content taught
- Makes no major errors or omissions when demonstrating concepts or processes taught

3 Usually demonstrates concepts and skills of standard taught this quarter

- Frequency of behavior, most of the time
- Requires limited support when demonstrating understanding
- Demonstrates a general understanding of content taught
- Makes few major errors or omissions when demonstrating concepts or processes

2 Sometimes demonstrates concepts and skills of standard taught this quarter

- Frequency of behavior, some of the time
- Requires moderate support in order to demonstrate understanding of concepts and skills
- Demonstrates a partial understanding of content taught
- Makes some errors or omissions when demonstrating concepts or processes

1 Seldom demonstrates concepts and skills of standard taught this quarter

- Frequency of behavior, seldom
- Requires considerable support in order to demonstrate learning of concepts and skills
- Demonstrates limited understanding of concepts, skills, and processes taught
- Makes frequent major errors when demonstrating concepts or processes

Elementary Progress Report

- Achievement Grade
- Effort Grade
- Life, Work & Citizenship

The progress report reflects the student's current level of understanding and demonstration of knowledge and skills.

Grade Level Events

- JMHS Pep Rally
- Middle School visit to Thoreau
- National Portrait Gallery
- ?????? - more information to follow

(dates and chaperone opportunities TBD)



FLINT HILL ELEMENTARY SCHOOL

parent teacher association

Please consider joining, if you haven't
already!

The PTA supports our school by:

- Classroom Technology
 - Teacher Materials
 - Field Trip Expenses
 - Teacher Training
 - Community Building
- And so much more!

3 Hour Early Release Days

We have **7** Mondays where the students will be released at 12:35pm to allow for teacher planning and professional development.

September 23

October 28

November 25

February 24

March 17

April 28

May 19



“No significant
learning can occur
without a significant
relationship.”

~James Comer

Questions?

Thank you for coming

ebspalding@fcps.edu